

# DTS MS 0365 Microsoft Extensions

## State of Arizona – Informational Update

Date of ITAC

January 19, 2022



### Agency Vision

All Arizonans who qualify receive timely DES services and achieve their potential

### Agency Mission

DES will ensure the strength and economic stability of Arizona by providing timely, temporary benefit assistance, and aid to vulnerable, qualifying Arizonans.



# Team Introduction

## Roles Present at ITAC

- Sponsors - Mark Darmer & Clay Sikes
- Managers - Cari Allen & Raj Kollengode
- Change Management - Victoria White, Jonathan Lucke & Sandra Guerrero
  - DES has trained 668 Google Gurus & Champions (through 12/23/21)
  - DES has 583 employees scheduled for the January 2022 semester
- PM - John Voris & Christopher Sterland

# Project Status

## Description of Project

- The PIJ is for the 0365 Microsoft Extensions. The approval condition was an informational update on the project of the Google Migration to reduce the 0365 licenses.

## We are returning for an informational update:





- The update is part of the PIJ approval condition for the MS 0365 Licensing Extension.

## Updates

- Phase I - SADA environment setup complete, analysis in process, user survey analysis completed, user communications initiated
- Phase II - PO issued to SADA, SADA production environment installed

# Project Health Card

## Overall Project Health is **GREEN**

Schedule	(Green, Yellow or Red box) Plus directional arrow. Ex. below	<ul style="list-style-type: none"> <li>• <b>Phase I: November 2021 - March 2022</b></li> <li>• <b>Phase II: January 2022 - July 2022</b></li> </ul>
Milestones		<ul style="list-style-type: none"> <li>• Phase I: Core team Migration - January 2022</li> <li>• Phase I: Rest of DTS, OPD, GIA migrated - February 2022</li> <li>• Phase I: O365 License recovery - March 2022</li> </ul>
Budget		<ul style="list-style-type: none"> <li>• Phase I - (PO0000365475) - \$317,700</li> <li>• Phase II - (PO0000382500) - \$564,400</li> <li>• No invoices submitted</li> </ul>
Risks		<ul style="list-style-type: none"> <li>• DES data structures are complex, requiring manual efforts to configure access</li> <li>• Posting for Temp DES resources complete - availability of qualified resources unknown at this time</li> <li>• Needs of power users, ADA requirements and Google security will result in some users not transitioning</li> <li>• Phase II planning was to be based on Phase I analysis and migration lessons learned. Analysis &amp; migration lessons will not be available until February 2022</li> <li>• Non-license related additional agency costs for resources to convert to Google Workspace</li> </ul>
Issues		<ul style="list-style-type: none"> <li>• File names cannot exceed 256 characters in Google (including folder structures)DES drive structures exceed Google's file counts and folder depth limits, this will require Divisions to reorganize their data. We do not have a full understanding of the work effort at this time.</li> </ul>

# Project Timeline

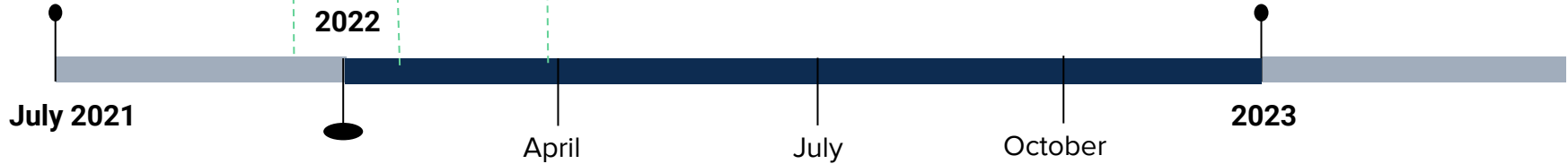
## Current timeline for Solution

### Phase I

Core Team Migration

DTS, OPD, GIA Migration

O365 License Recovery



### Phase II

*SADA scheduled being defined*

# Q & A Session

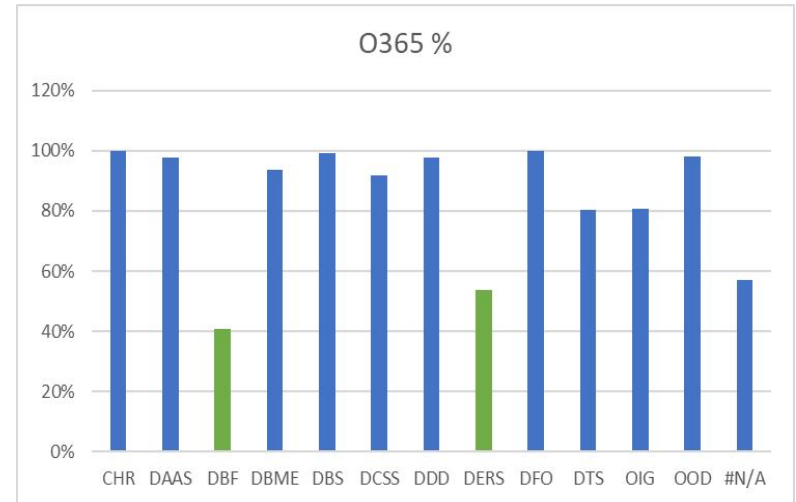
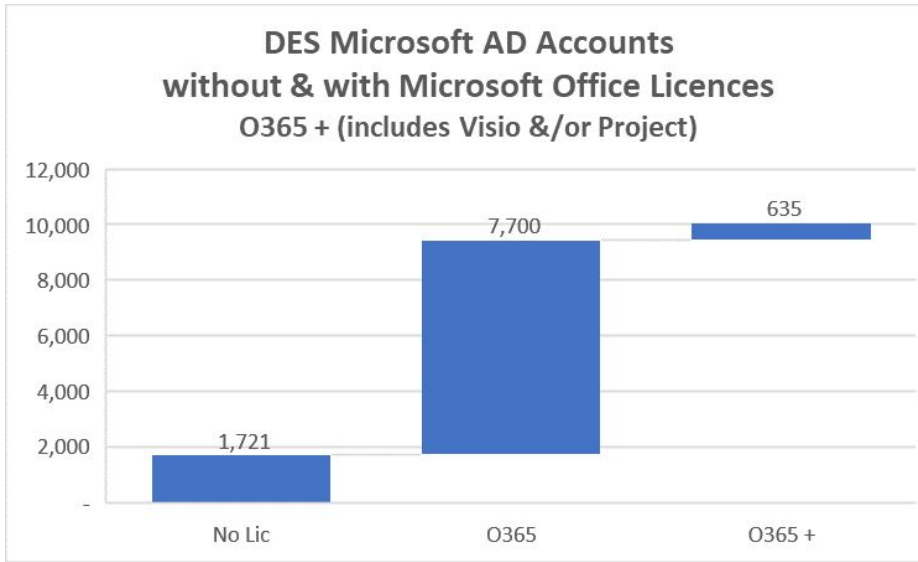
# Appendix

If you want to add information  
but not discussed in the  
presentation.

# DES Active Directory Accounts with and without Office 365 licenses

DES owns 8500 Microsoft O365 Licenses.

- ~8300 are assigned to active accounts
- ~200 are in transition due to DES new and exiting employees
- DES - DERS UI has worked with DTS to reduce their O365 usage to 54%

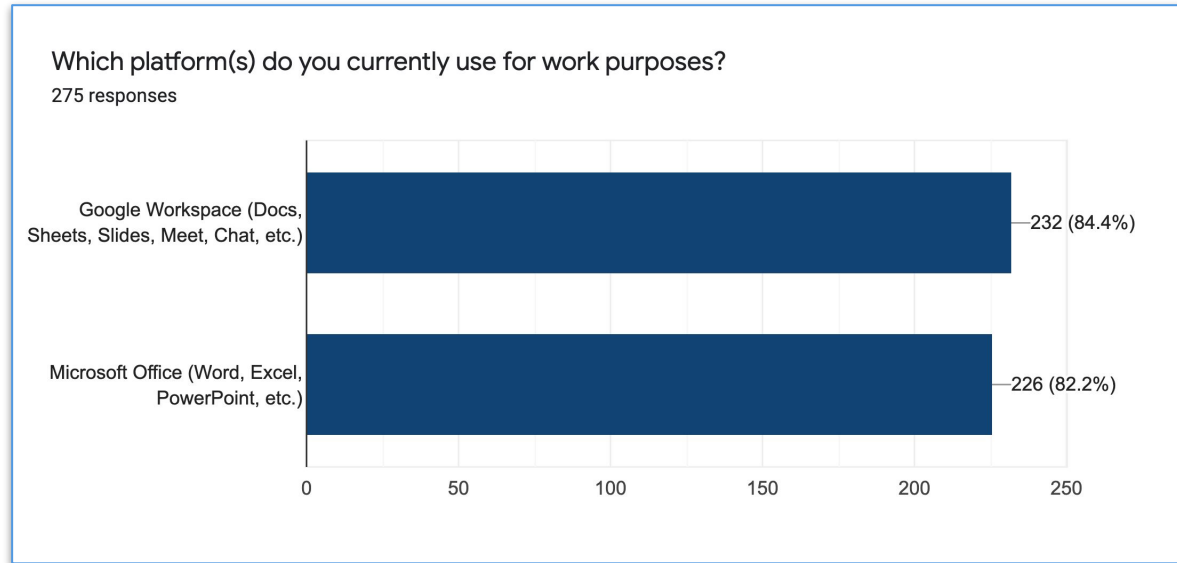




# Google Workspace vs. Microsoft Office

Which platforms do DES staff use? - answer - both O365 & Google WorkSpace

More than **82%** of **Phase 1** survey respondents use **Google Workspace** and/or **Microsoft Office**

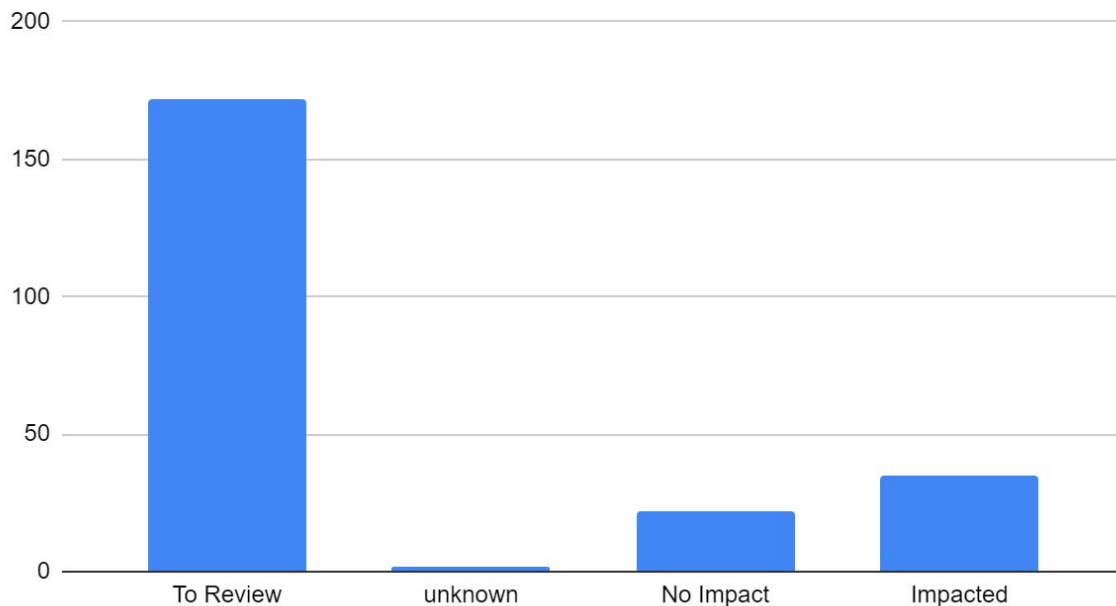


## DES Applications - Analysis as of January 03, 2022

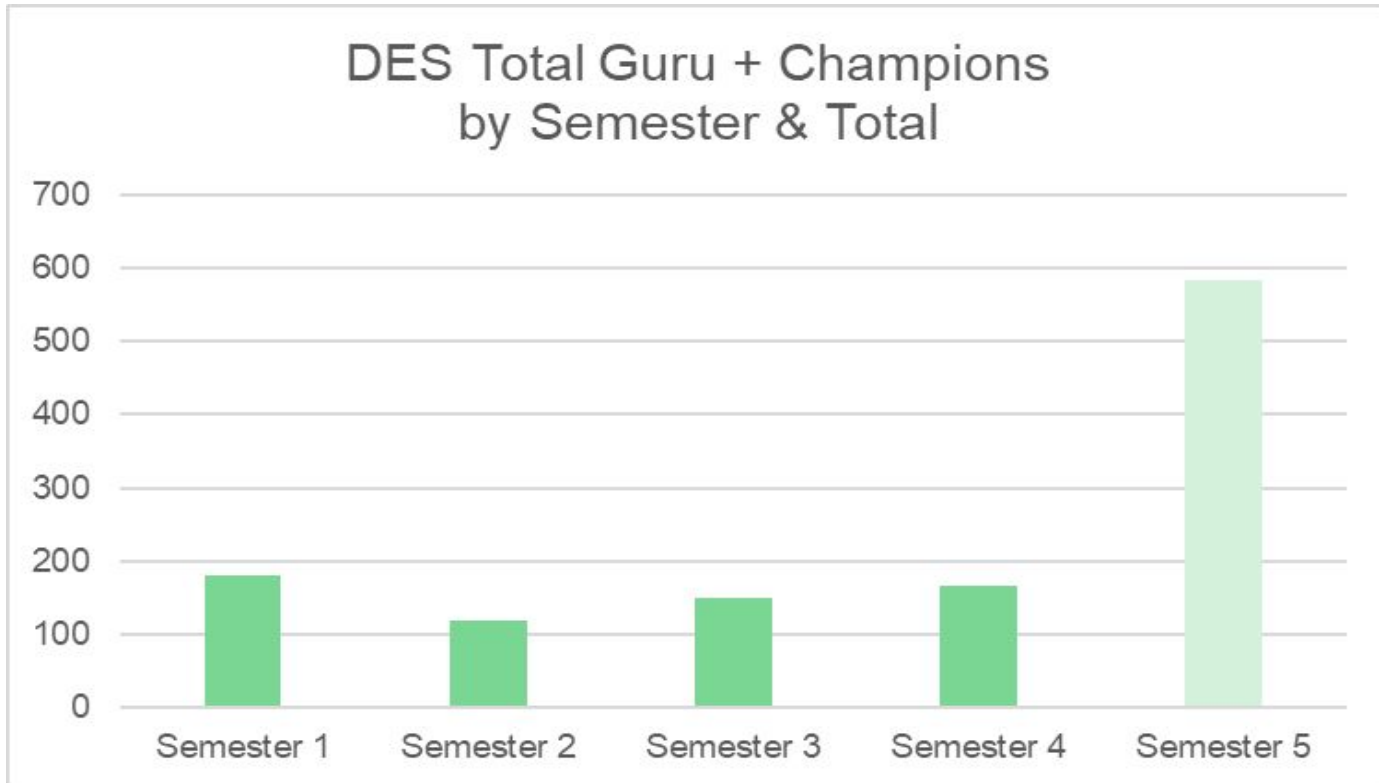
DES Program Application Managers are in the process of analyzing the impact of transitioning to Google Drive

Application testing will be initiated in January 2022

DES CMDB Applications - January 2022 - Review Status



# DES Google - Guru & Champions



Note: Semester 5 just started - completion rate ~ 74%